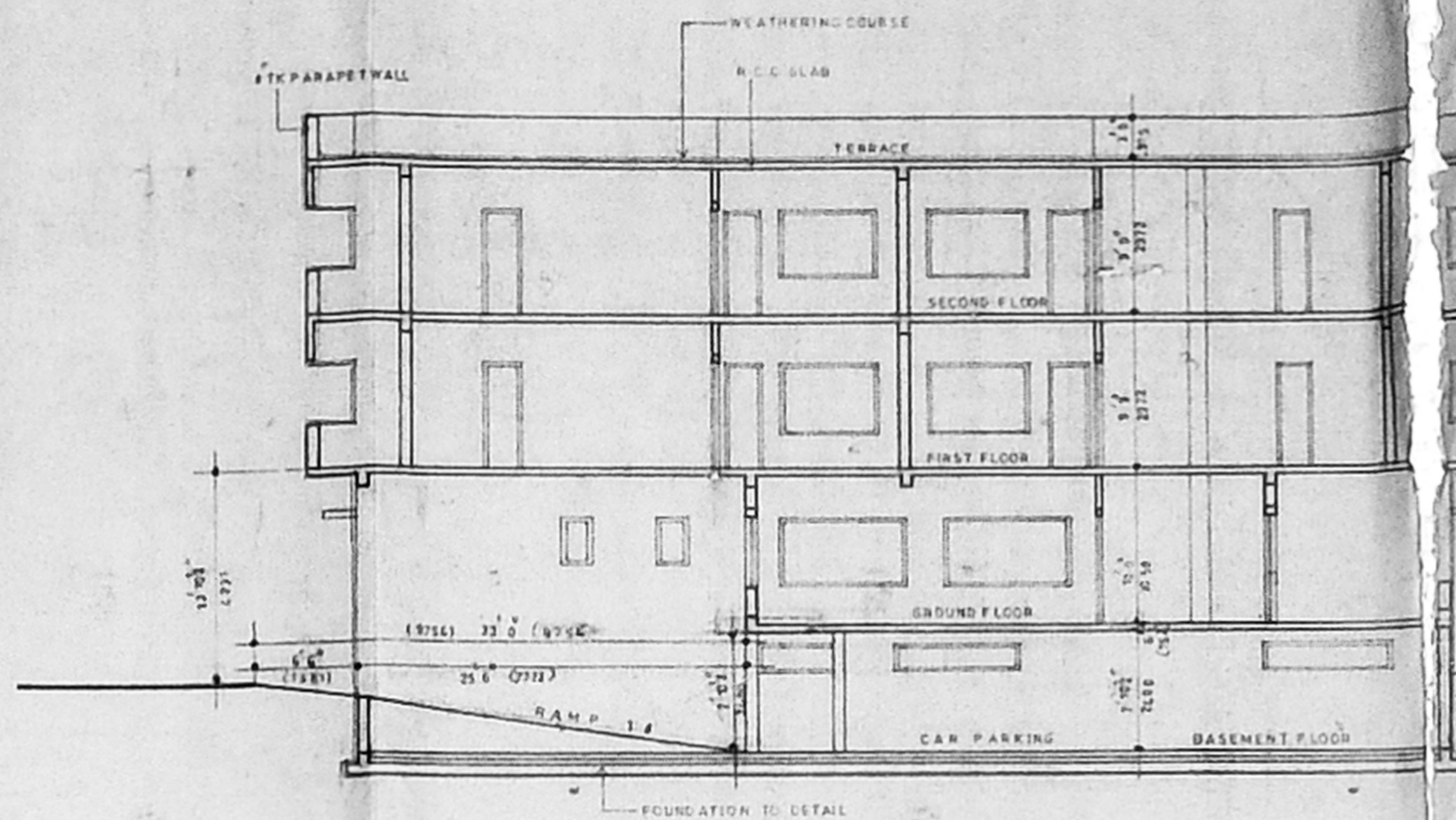
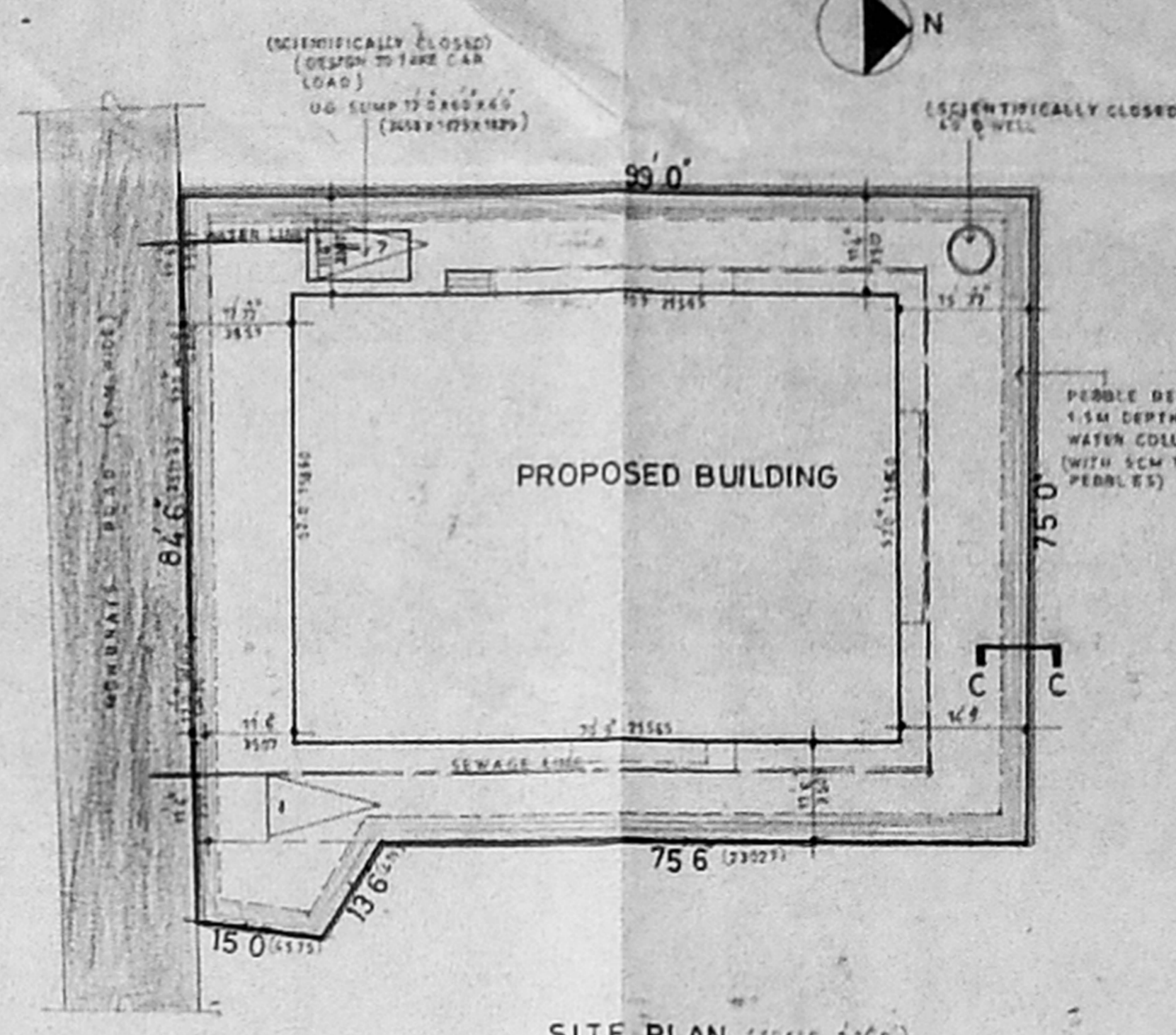


ELEVATION



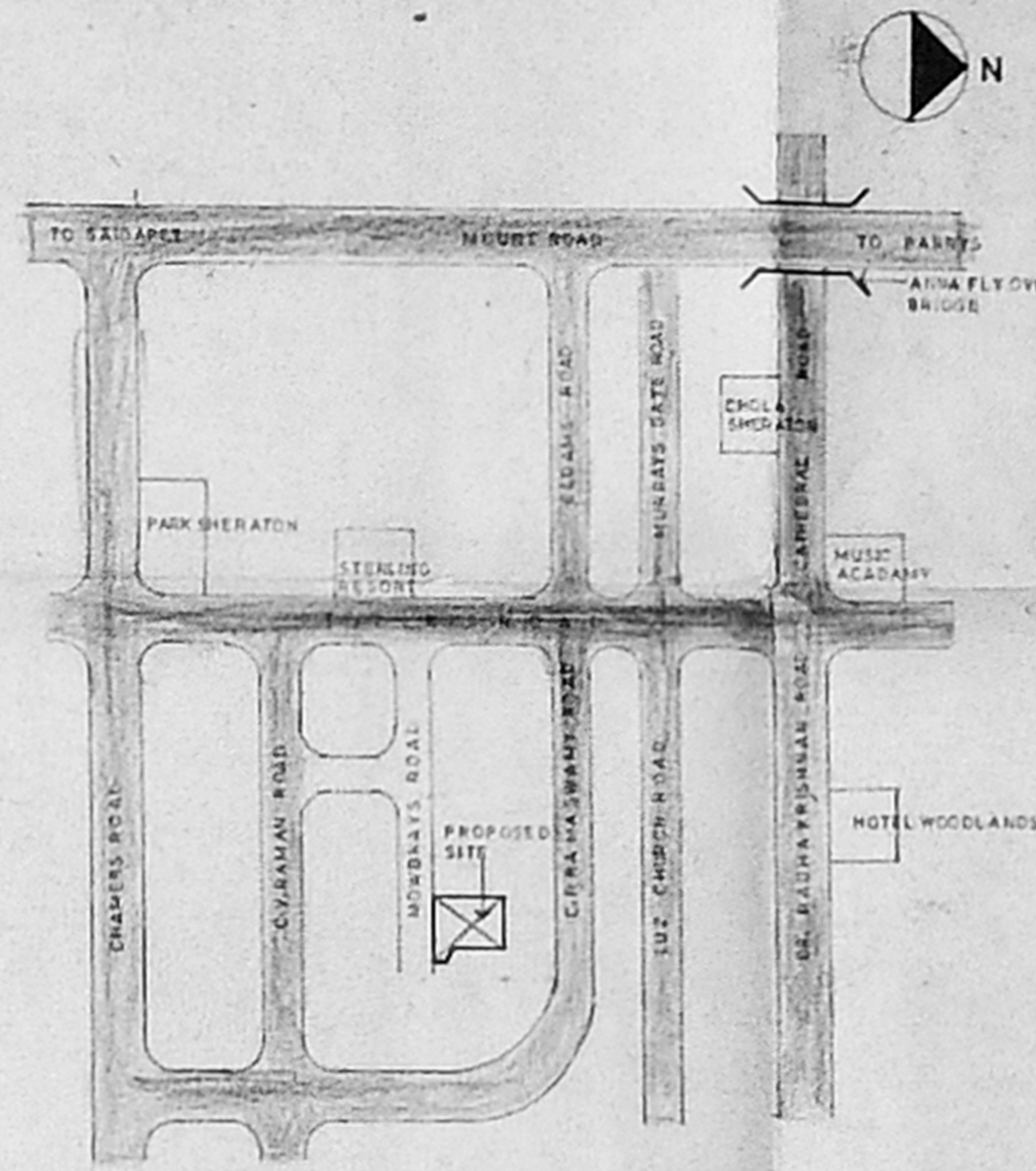
SECTION - XX



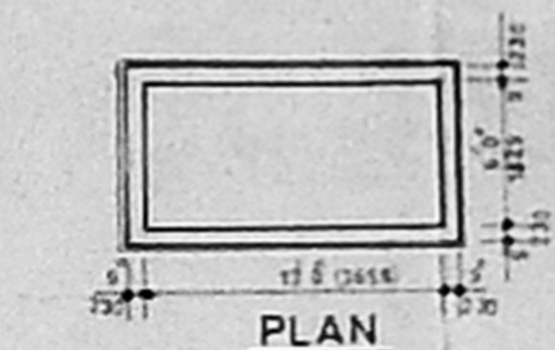
SITE PLAN (SCALE 1:400)



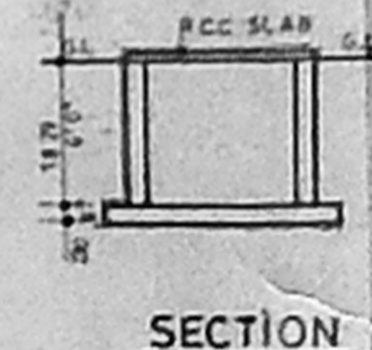
SECTION WELL DETAIL (SCIENTIFICALLY CLOSED)



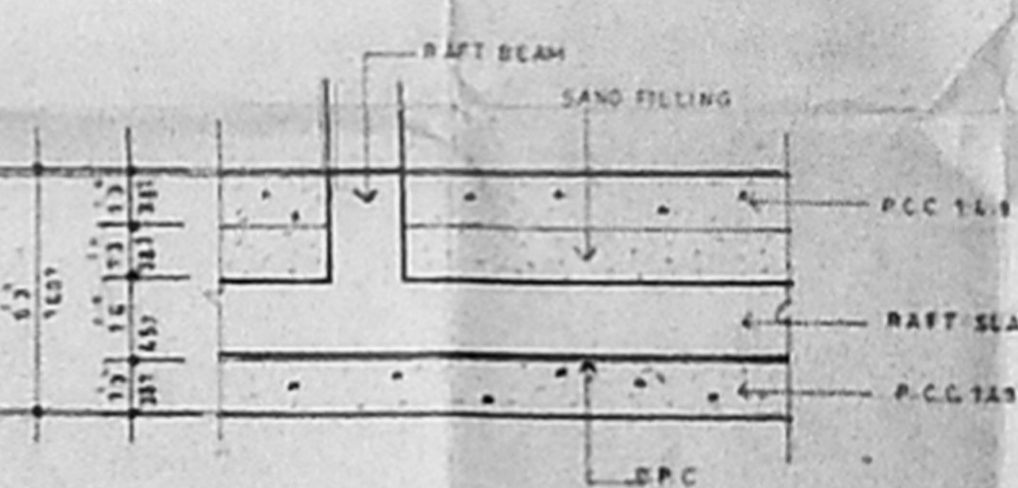
KEY PLAN (N.T.S.)



PLAN U.G. SUMP DETAIL (SCIENTIFICALLY CLOSED)



SECTION FOUNDATION DETAIL



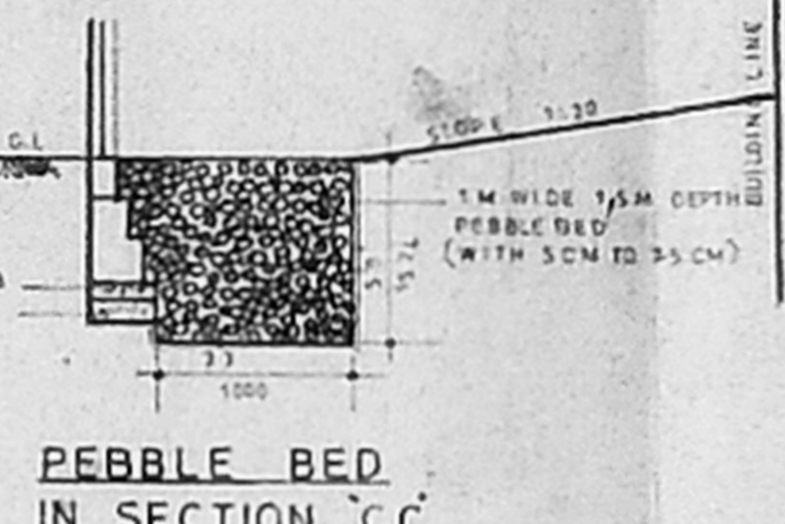
FOUNDATION DETAIL



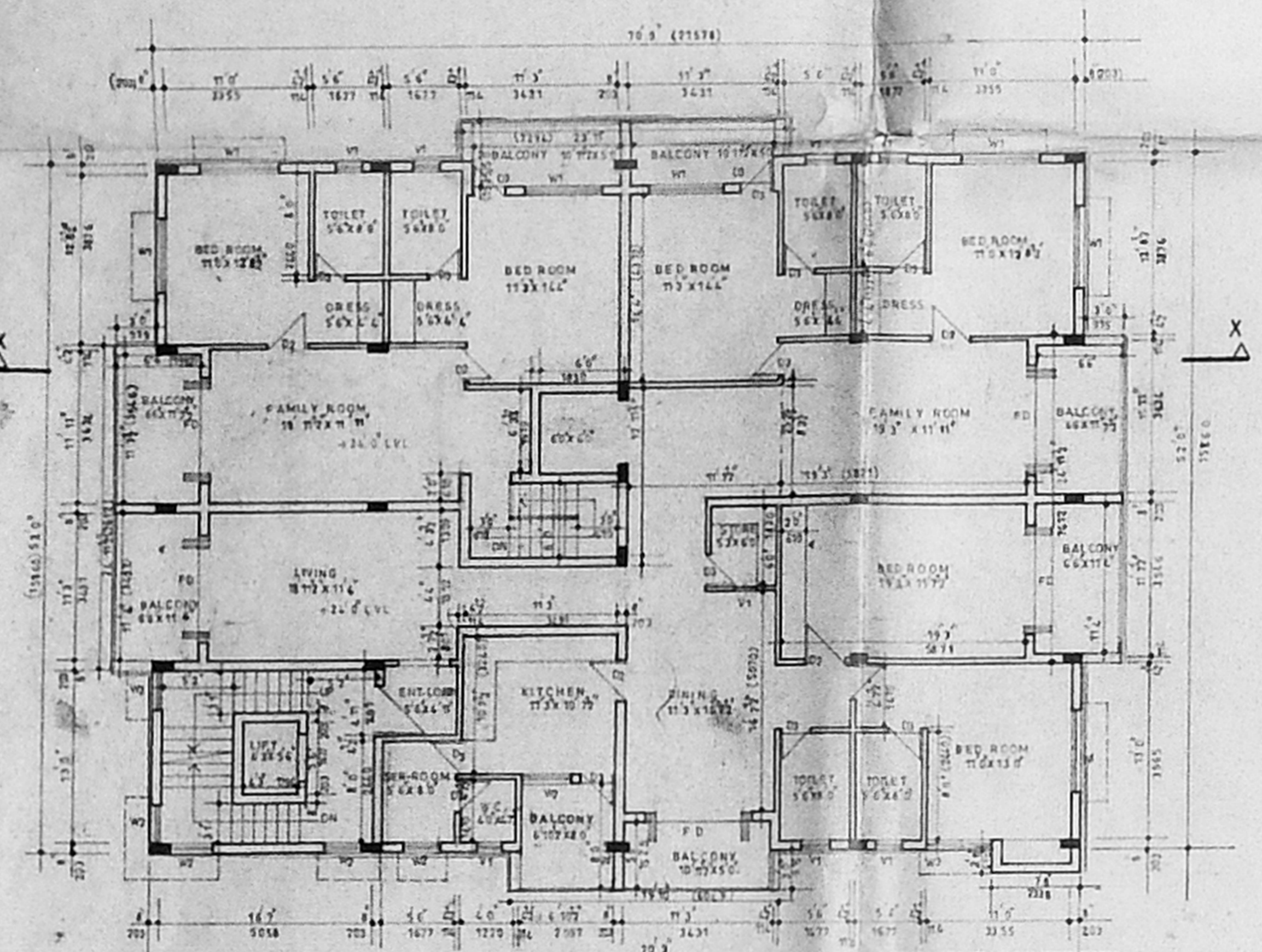
ELEVATION

SECTION

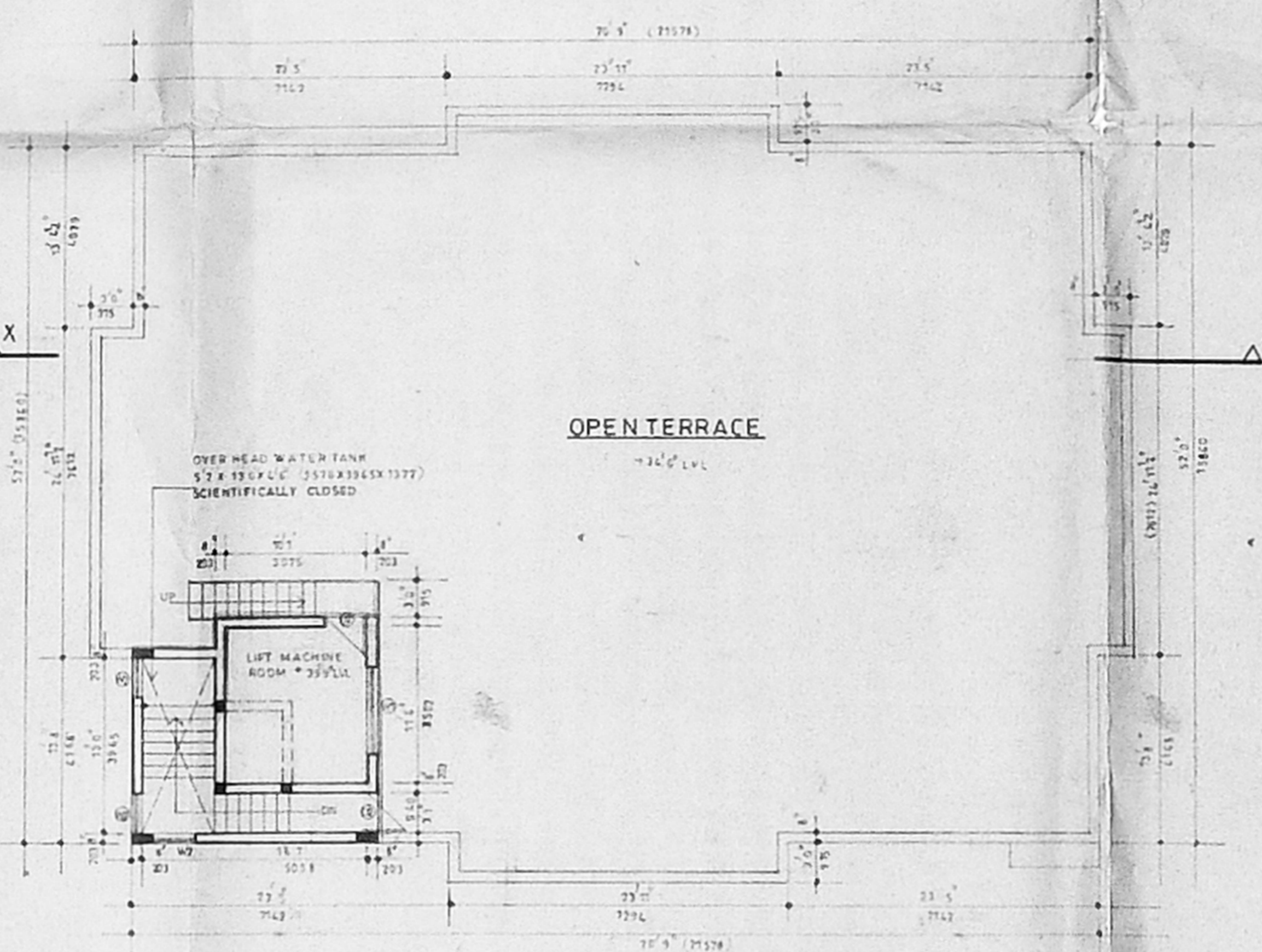
COMPOUND WALL DETAIL



PEBBLE BED IN SECTION C-C

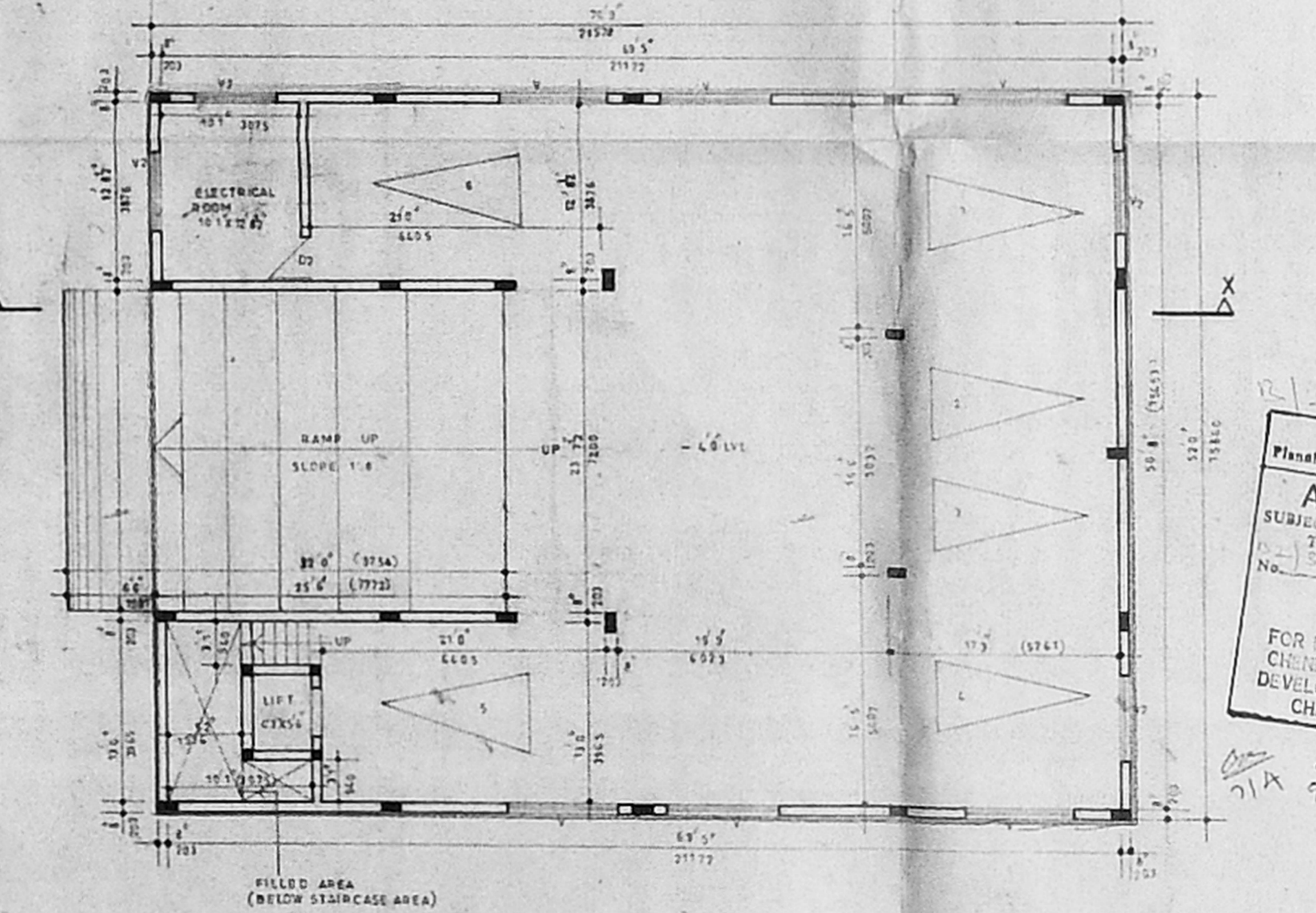


SECOND FLOOR PLAN

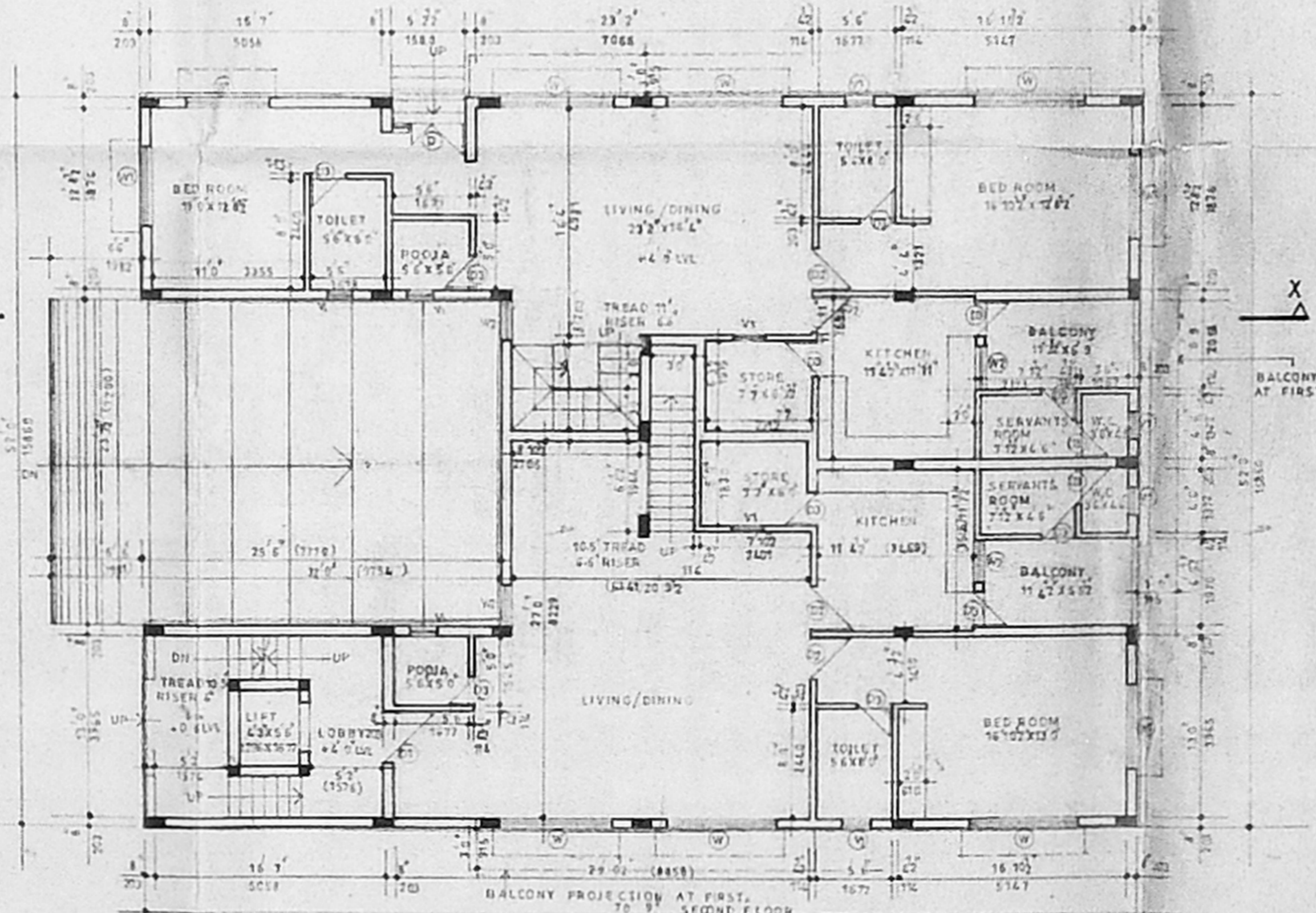


OPEN TERRACE

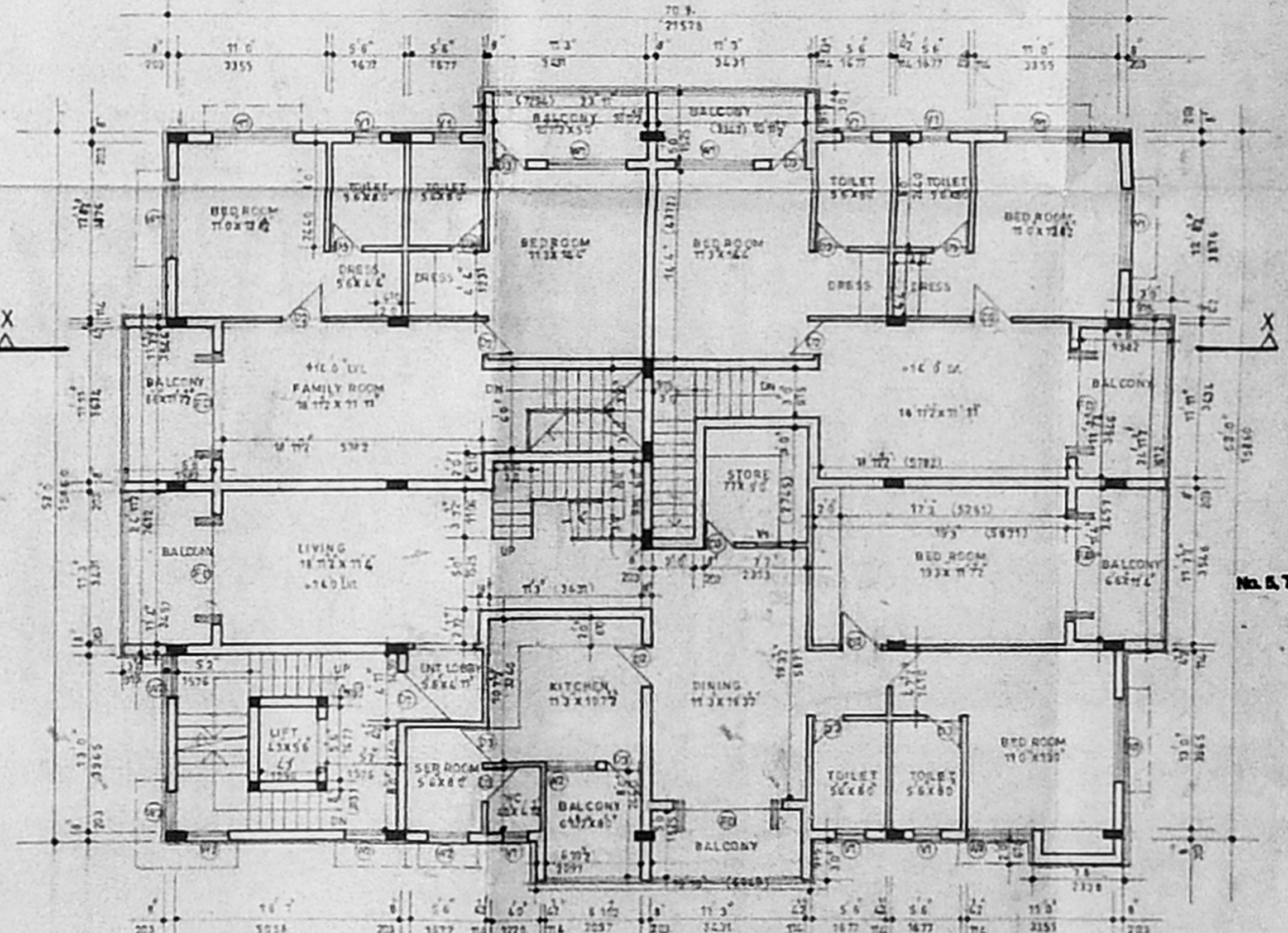
TERRACE FLOOR PLAN



BASEMENT FLOOR PLAN



GROUND FLOOR PLAN



FIRST FLOOR PLAN

Plan No. 1228/92
APPROVED
 SUBJECT TO THE CONDITIONS 1
 THIS OFFICE LETTER
 No. 1228/92 Date 4/19/92
 FOR MEMBER SECRETARY
 CHENNAI METROPOLITAN
 DEVELOPMENT AUTHORITY
 CHENNAI-600 008.

SCHEDULE OF JOINERY

REF	DESCRIPTION	QTY
01	T.W. DOOR	12
02	T.W. SHUTTER DOOR	12
03	T.W. DOOR	12
04	T.W. BATTERY DOOR	12
05	T.W. WINDOW	12
06	T.W. WINDOW	12
07	T.W. WINDOW	12
08	T.W. WINDOW	12
09	T.W. WINDOW	12
10	T.W. WINDOW	12
11	T.W. WINDOW	12
12	T.W. WINDOW	12
13	T.W. WINDOW	12
14	T.W. WINDOW	12
15	T.W. WINDOW	12
16	T.W. WINDOW	12
17	T.W. WINDOW	12
18	T.W. WINDOW	12
19	T.W. WINDOW	12
20	T.W. WINDOW	12
21	T.W. WINDOW	12
22	T.W. WINDOW	12
23	T.W. WINDOW	12
24	T.W. WINDOW	12
25	T.W. WINDOW	12
26	T.W. WINDOW	12
27	T.W. WINDOW	12
28	T.W. WINDOW	12
29	T.W. WINDOW	12
30	T.W. WINDOW	12
31	T.W. WINDOW	12
32	T.W. WINDOW	12
33	T.W. WINDOW	12
34	T.W. WINDOW	12
35	T.W. WINDOW	12
36	T.W. WINDOW	12
37	T.W. WINDOW	12
38	T.W. WINDOW	12
39	T.W. WINDOW	12
40	T.W. WINDOW	12
41	T.W. WINDOW	12
42	T.W. WINDOW	12
43	T.W. WINDOW	12
44	T.W. WINDOW	12
45	T.W. WINDOW	12
46	T.W. WINDOW	12
47	T.W. WINDOW	12
48	T.W. WINDOW	12
49	T.W. WINDOW	12
50	T.W. WINDOW	12
51	T.W. WINDOW	12
52	T.W. WINDOW	12
53	T.W. WINDOW	12
54	T.W. WINDOW	12
55	T.W. WINDOW	12
56	T.W. WINDOW	12
57	T.W. WINDOW	12
58	T.W. WINDOW	12
59	T.W. WINDOW	12
60	T.W. WINDOW	12
61	T.W. WINDOW	12
62	T.W. WINDOW	12
63	T.W. WINDOW	12
64	T.W. WINDOW	12
65	T.W. WINDOW	12
66	T.W. WINDOW	12
67	T.W. WINDOW	12
68	T.W. WINDOW	12
69	T.W. WINDOW	12
70	T.W. WINDOW	12
71	T.W. WINDOW	12
72	T.W. WINDOW	12
73	T.W. WINDOW	12
74	T.W. WINDOW	12
75	T.W. WINDOW	12
76	T.W. WINDOW	12
77	T.W. WINDOW	12
78	T.W. WINDOW	12
79	T.W. WINDOW	12
80	T.W. WINDOW	12
81	T.W. WINDOW	12
82	T.W. WINDOW	12
83	T.W. WINDOW	12
84	T.W. WINDOW	12
85	T.W. WINDOW	12
86	T.W. WINDOW	12
87	T.W. WINDOW	12
88	T.W. WINDOW	12
89	T.W. WINDOW	12
90	T.W. WINDOW	12
91	T.W. WINDOW	12
92	T.W. WINDOW	12
93	T.W. WINDOW	12
94	T.W. WINDOW	12
95	T.W. WINDOW	12
96	T.W. WINDOW	12
97	T.W. WINDOW	12
98	T.W. WINDOW	12
99	T.W. WINDOW	12
100	T.W. WINDOW	12

SPECIFICATIONS

FOUNDATION
 ALL FOOTINGS TO BE LAID OVER BED OF PCC OR OVER A SAND CUSHION BRICK SUPPORTED BY PLINTH BEAM.

ROOF STRUCTURE
 BRICK WORK IN CEMENT MORTAR 1:5 MIX.

R.C.C.
 BEAMS, LINTOLS, STAIRS, SLABS, GUN SHARDS ETC. IN 1:2:4 MIX WITH SUITABLE REINFORCEMENT.

FINISHES
 MOSAIC TILE FLOORING WALLS ARE PLASTERED WITH CM 1:4 MIX AND PAINTED.

JOINERY
 BEST INDIAN T.W. AND GOOD QUALITY ALUMINIUM EXTRUSION.

AREA STATEMENT

	SQ. FT.	SQ. M.
PLOT AREA	7684.0	711.71
BASEMENT FLOOR (UNDER ROW EGG)	3479.0	322.33
GROUND FLOOR	3284.0	304.41
FIRST FLOOR	3276.0	303.60
SECOND FLOOR	3276.0	303.60
TOTAL	13925.0	1285.25

REFERENCE

PROPOSED: _____
 ROAD: _____
 BOUNDARY: _____
 SEWAGE LINE: _____
 WATER LINE: _____

For SOUTHERN INVESTMENTS
 Power of Attorney

PRAMOD BALAKRISHNAN
 RA. NO. 142, CLASS
 No. 8, THIRD FLOOR, 13, SECOND MAIN ROAD,
 KENRU NAGAR, ADYAR, MADRAS-600 008.
 MAADRMS-800 008.

PROPOSED APARTMENT BUILDING AT DOOR NO. 13
 8340-485/28-WEAPAPPE DIVISION,
 BLOCK NO. 36, TRIPLICANE TALUK.

edifice
 ARCHITECTURE & INTERIORS
 5, THIRD FLOOR, 13, SECOND MAIN ROAD,
 KENRU NAGAR, ADYAR, MADRAS-600 008.

JOB NO.	DWG. NO.	C 01
1228/92	1228/92	1228/92
DATE	JAN 92	